

Name the types of triangles

Describe and Draw

Classified by angles

--	--	--	--

Classified by Sides

--	--	--

$$\triangle ABC \cong \triangle ZXY$$

List the Corresponding parts
And find the missing angles

$$\angle A \cong$$

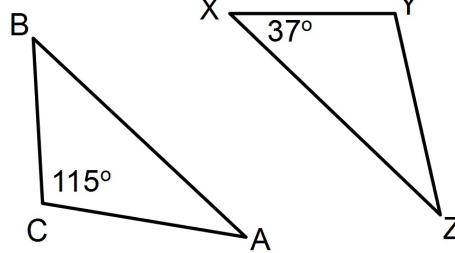
$$\angle B \cong$$

$$\angle C \cong$$

$$\overline{AB} \cong$$

$$\overline{AC} \cong$$

$$\overline{BC} \cong$$

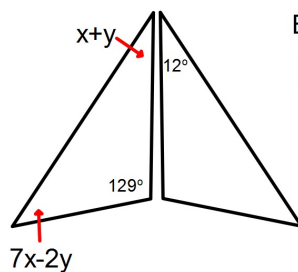


$$m\angle A =$$

$$m\angle B =$$

$$m\angle C =$$

Quiz Review



Both triangles are \cong

Find x and y